

Technical Details

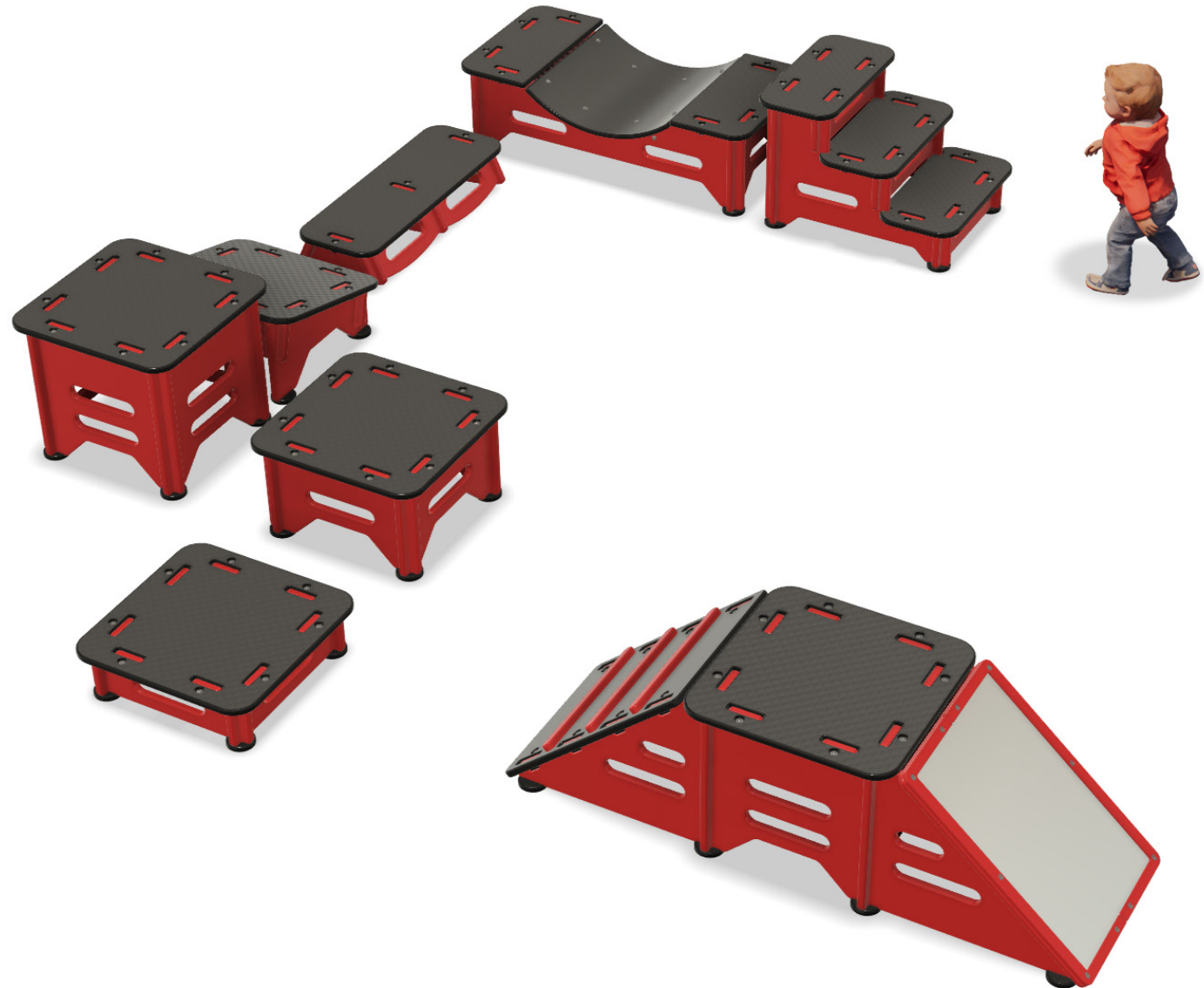
- x12 Blocks
- Average (L x W x H): 770mm x 500mm x 430mm
- 19mm HDPE plastic sheet
- High quality aluminium sheet (slide)
- Anti-slip rubber feet

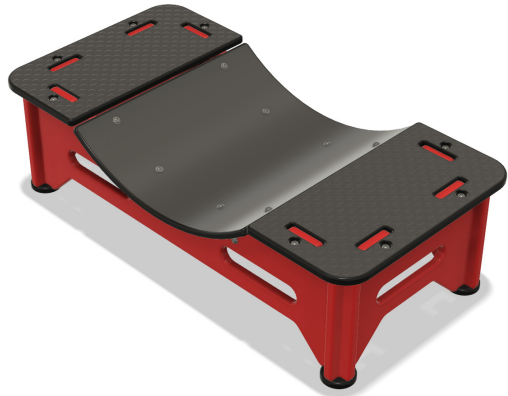
Introducing our new Build-A-Trail, a set of movable blocks that add open-ended active play value to your setup. With 8 exciting blocks, this set offers endless possibilities for your little learners to jump, step and climb from one to the next and build confidence in their gross motor skills.

The cutout handle grip on the sides serves a dual purpose - it allows for easy block repositioning and provides support to those who are still finding their balance.

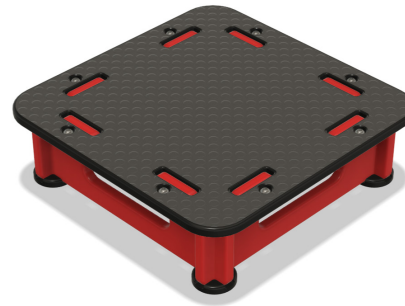
HDPE is used across a wide range of industries and applications to replace timber and composite panel components. HDPE offers a softer, warmer and more play friendly feel to touch and it is 100% recyclable.

Please note, we recommend a minimum fall space of 1.5m within the surrounding area of your Build-a-Trail set.

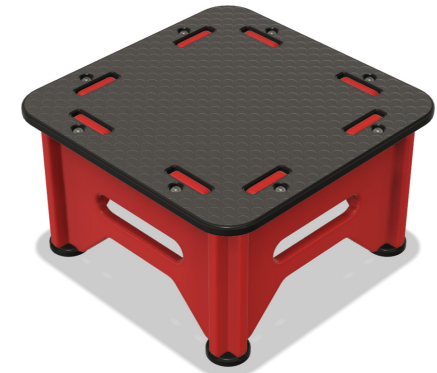




Concave Bridge



Platform 140mm



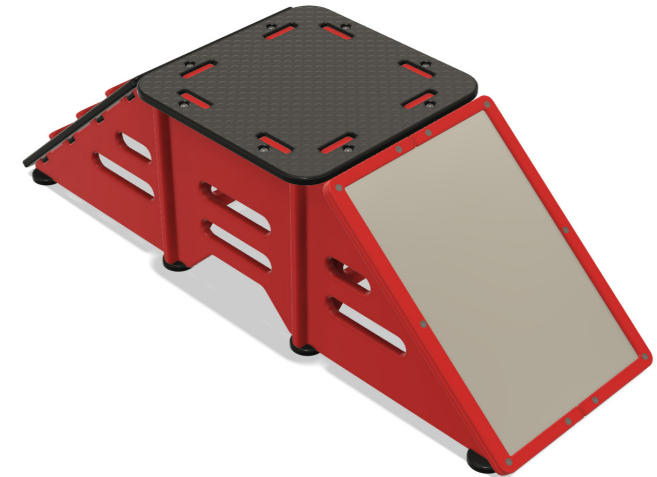
Platform 280mm



Platform 420mm



Three Step Stairs



Climb & Slide



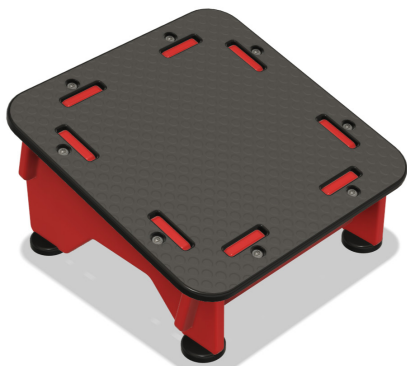
Wobble Beam



Mini Step



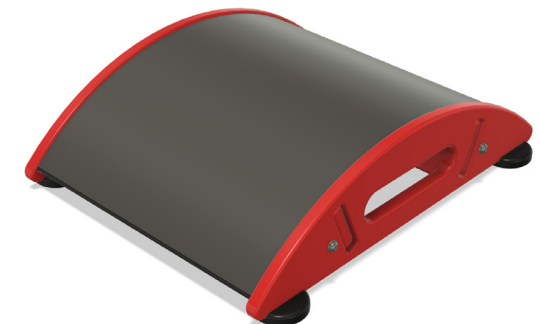
Little Ladder



Mini Ramp



Crawl Thru Ring



Mini Ramp

